

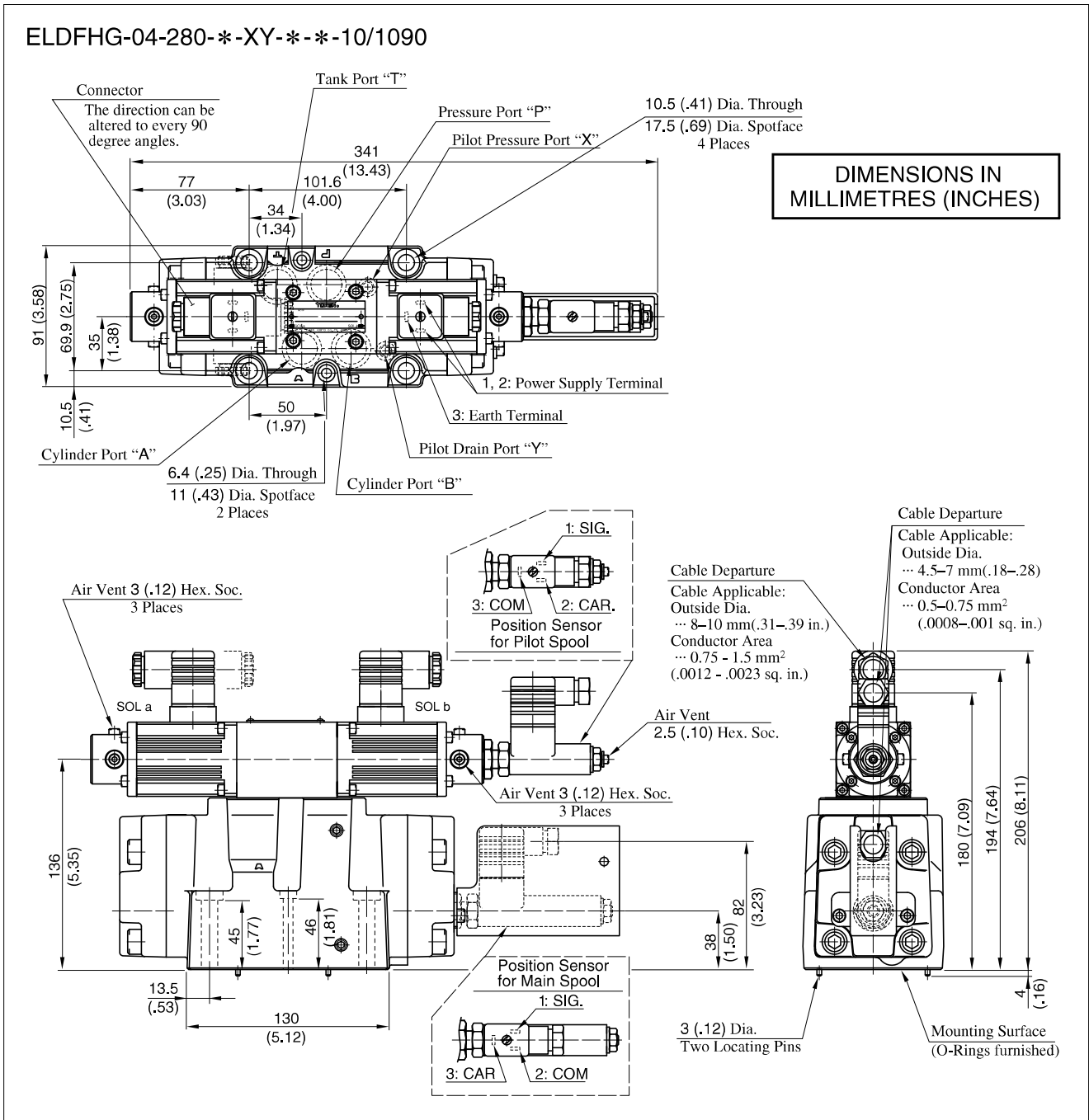
**Applicable Power Amplifiers**

For stable performance, it is recommended that Yuken's applicable power amplifiers be used (for details see [page 786](#)).  
 Model Numbers: AMB-EL-\*\*-\*\*-10

**Attachment**

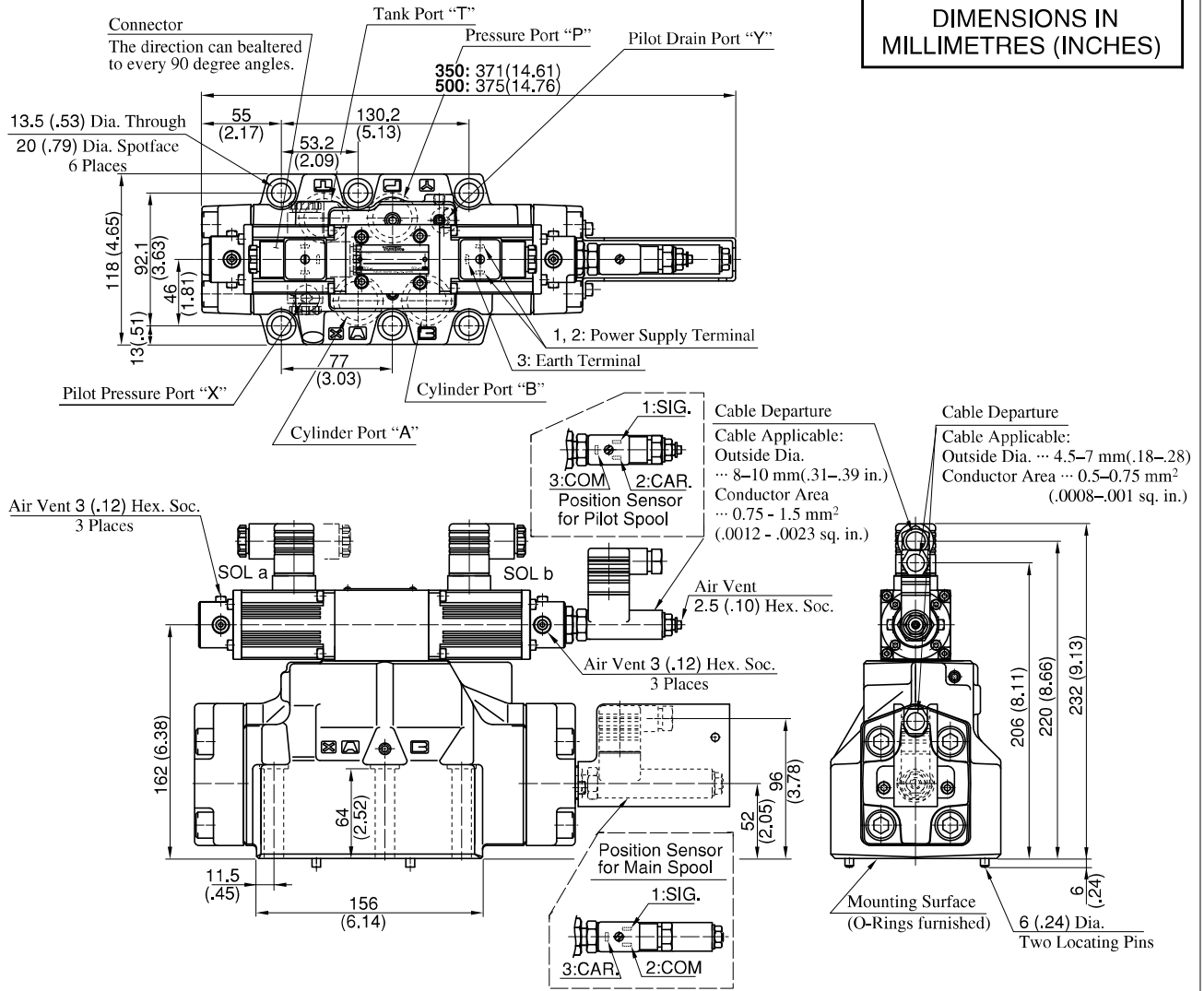
**Mounting Bolts**

Model Numbers	Socket Head Cap Screw			Qty.	Tightening Torque Nm (in. lbs.)
	Japanese Standard "JIS" European Design Standard	N. American Design Standard			
ELDFHG-04	M6 × 55 Lg.	1/4-20 UNC × 2-1/4 Lg.		2	12 - 15 (106 - 133)
	M10 × 60 Lg.	3/8-16 UNC × 2-1/2 Lg.		4	58 - 72 (513 - 637)
ELDFHG-06	M12 × 85 Lg.	1/2-13 UNC × 3-1/2 Lg.		6	100 - 123 (885 - 1089)



**ELDFHG-06-\*-XY-\*-10/1090**

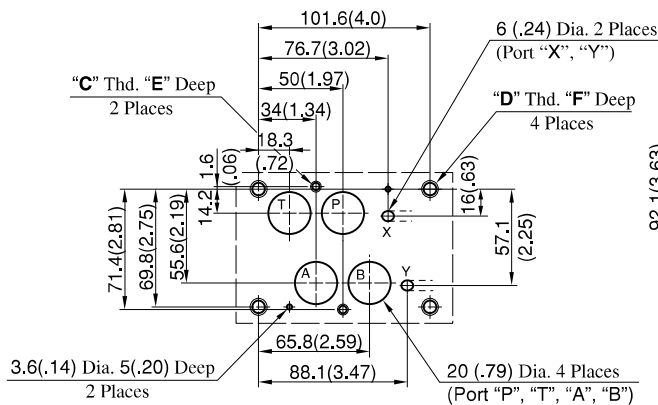
**DIMENSIONS IN MILLIMETRES (INCHES)**



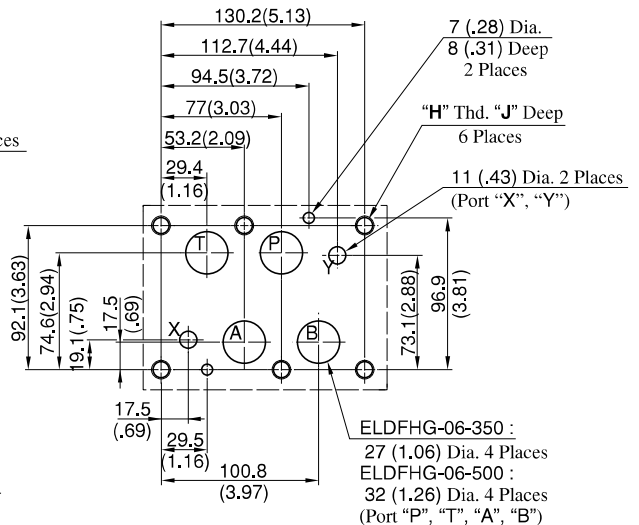
**Dimensions of valve mounting surface**

Prepare a mounting surface as shown to the below.  
Also finish it finely.

● **ELDFHG-04**



● **ELDFHG-06**



Model Numbers	"C" Thd.	"D" Thd.	"E" mm (in.)	F mm (in.)
ELDFHG-04-*-10	M6	M10	12 (.47)	17 (.67)
ELDFHG-04-*-1090	1/4-20 UNC	3/8-16 UNC	14 (.55)	20 (.79)

Model Numbers	"H" Thd.	J mm (in.)
ELDFHG-06-*-10	M12	24 (.94)
ELDFHG-06-*-1090	1/2-13 UNC	28 (1.10)