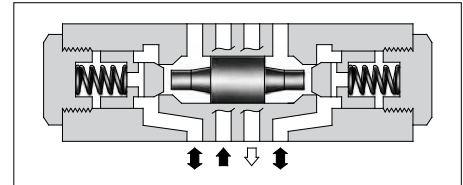


Pilot Operated Check Modular Valves

Specifications

Model Numbers		Max. Operating Pressure MPa (PSI)	Max. Flow L/min (U.S.GPM)
Standard	MP*-01-*-40	31.5 (4570)	35 (9.25)
Low Pilot Pressure Control Type	MP*-01-*-4001		

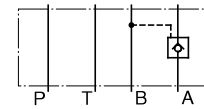


Model Number Designation

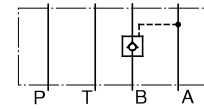
F-	MPA	-01	-2	-40	*
Special Seals	Series Number	Valve Size	Cracking Pressure MPa (PSI)	Design Number	Design Standard
F: Special Seals for Phosphate Ester Type Fluids (Omit if not required)	MPA: Pilot Operated Check Valve for A-Line MPB: Pilot Operated Check Valve for B-Line MPW: Pilot Operated Check Valve for A&B-Lines	01	2: 0.2 (29) 4: 0.4 (58)	40 (Standard) 4001 (Low Pilot Pressure Control Type)	Refer to ★

★ Design Standards: None Japanese Standard "JIS", European Design Standard and N. American Design Standard

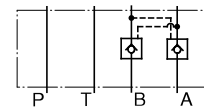
Graphic Symbols



MPA-01



MPB-01

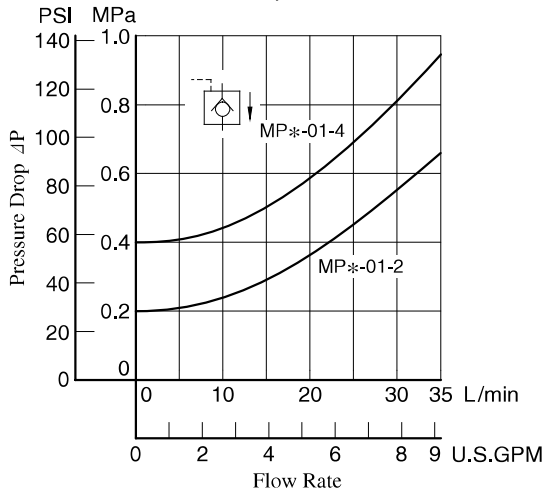


MPW-01

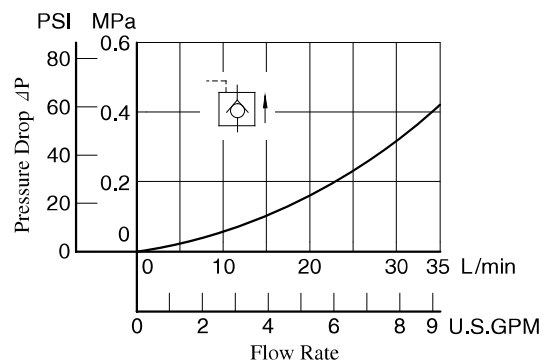
Typical Performance Characteristics

Hydraulic Fluid: Viscosity 35 mm²/s (164 SSU),
Specific Gravity 0.850

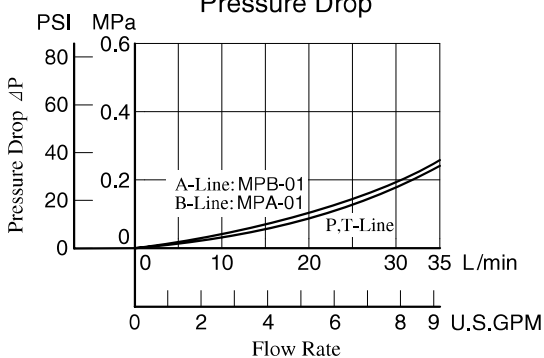
Pressure Drop for Free Flow



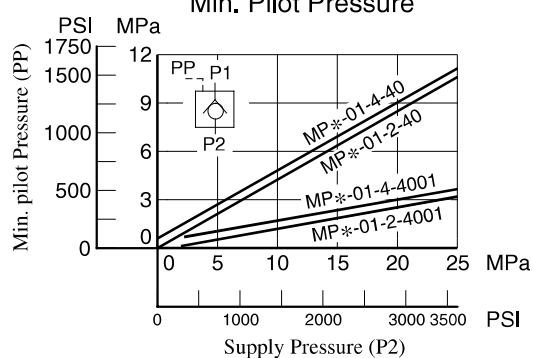
Pressure Drop for Reversed Controlled Flow



Pressure Drop

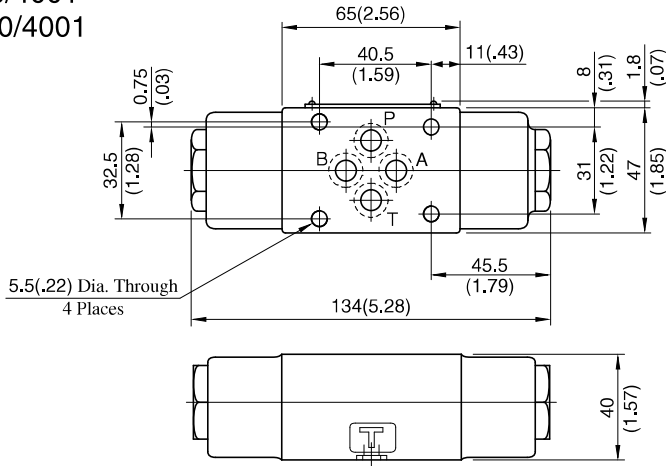


Min. Pilot Pressure



MPA-01-*-40/4001
 MPB-01-*-40/4001
 MPW-01-*-40/4001

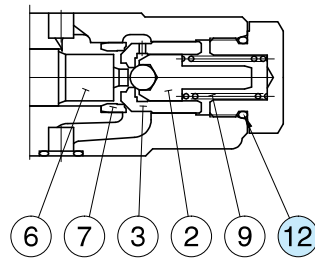
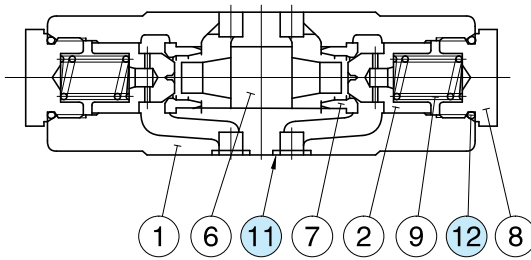
**DIMENSIONS IN
 MILLIMETRES (INCHES)**



Approx. Mass..... 1.2 kg (2.6 lbs.)

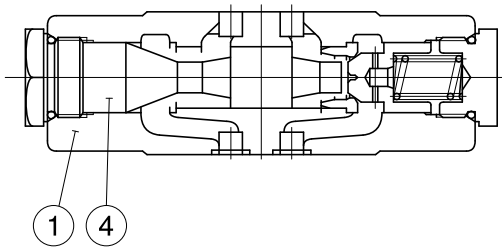
Spare Parts List

MPW-01-*-40

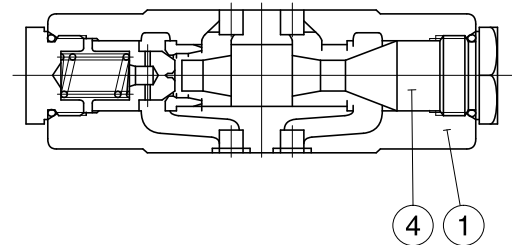


Low Pilot Pressure Control Type
 (MPW-01-*-4001)

MPA-01-*-40



MPB-01-*-40



List of Seals

Item	Name of Parts	Part Numbers	Qty.	Remarks
11	O-Ring	SO-NB-P9	4	Included in Seal Kit Kit No.: KS-MAC-01-30
12	O-Ring	SO-NB-P18	2	